

# etc-an-update

Technical documentation

## What is etc-an-update?

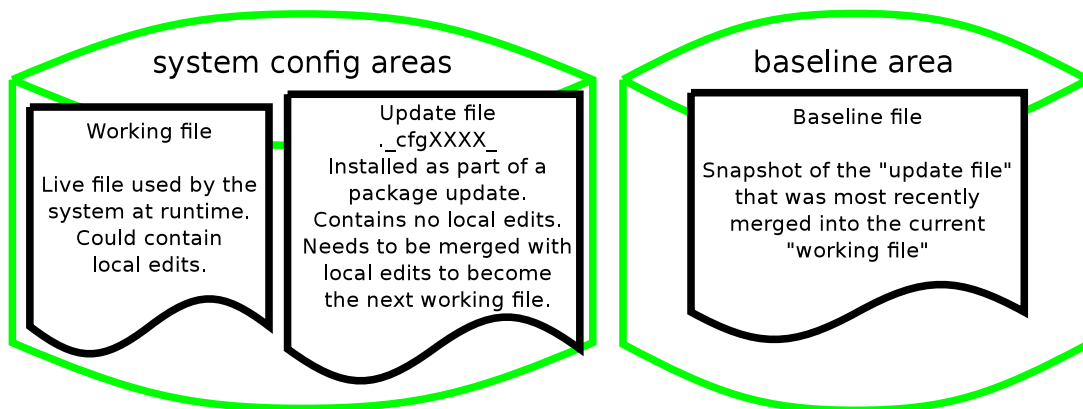
This utility is intended for gentoo linux. It updates configuration files semi-automatically. It can...

- Identify and update (without the user) any config file that hasn't been customised/ changed since installation
- Assist with merging a customised config file

This helps to make sure that important system-specific settings are not lost while performing an update.

## How does it work?

It achieves this by storing baseline (ancestor) copies of all the system configuration files delivered by portage. The following diagram shows the 3 files that will exist on your system for every config file that requires an update...



Note that the "baseline area" is created and managed by etc-an-update. If you haven't previously used this utility then the baseline area won't yet exist on your system.

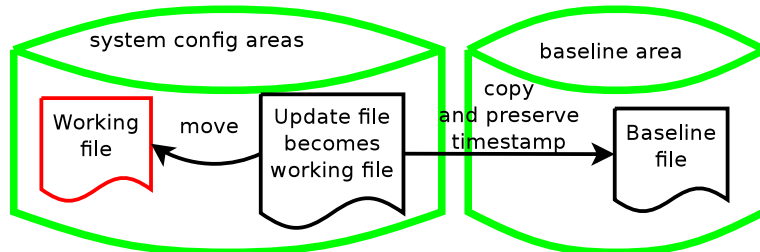
# How are the baseline files used/ maintained?

When appropriate... one of the following four actions is performed for a particular config file

## Action

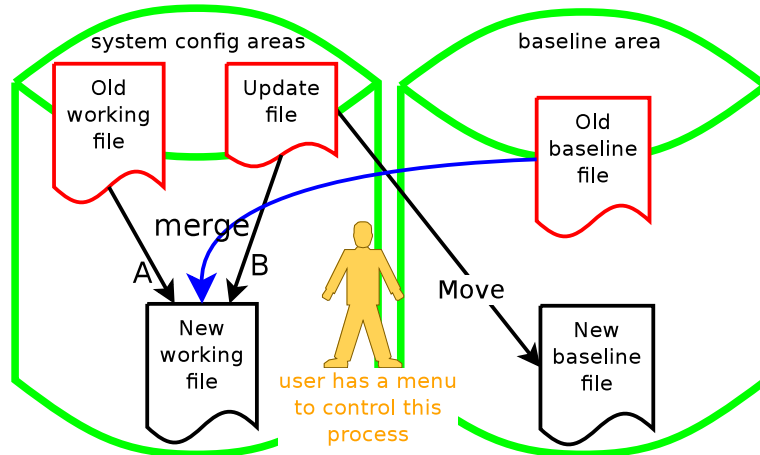
## Effect on the files

**A**  
Accept update

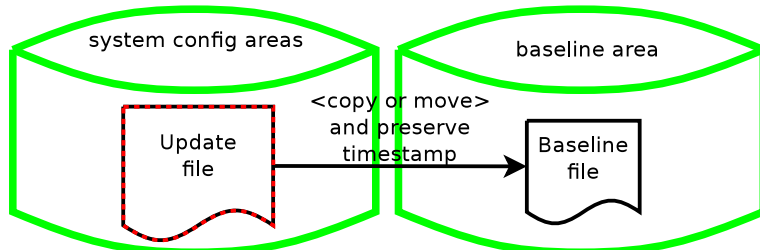


**B**  
Merge with ancestor  
(+manual check)

Red files no longer exist in their current location after the process.  
Blue arrow is ancestor, and helps to choose whether to take from A or B in difference regions.

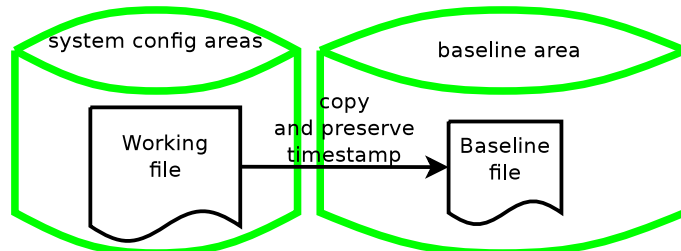


**C**  
<copy or move>  
the update file  
to the baseline  
file



**D**  
Copy the  
working file  
to the baseline  
file

Used to obtain an initial baseline. Never used again after a baseline exists. Checks are done to ensure it contains no user changes.



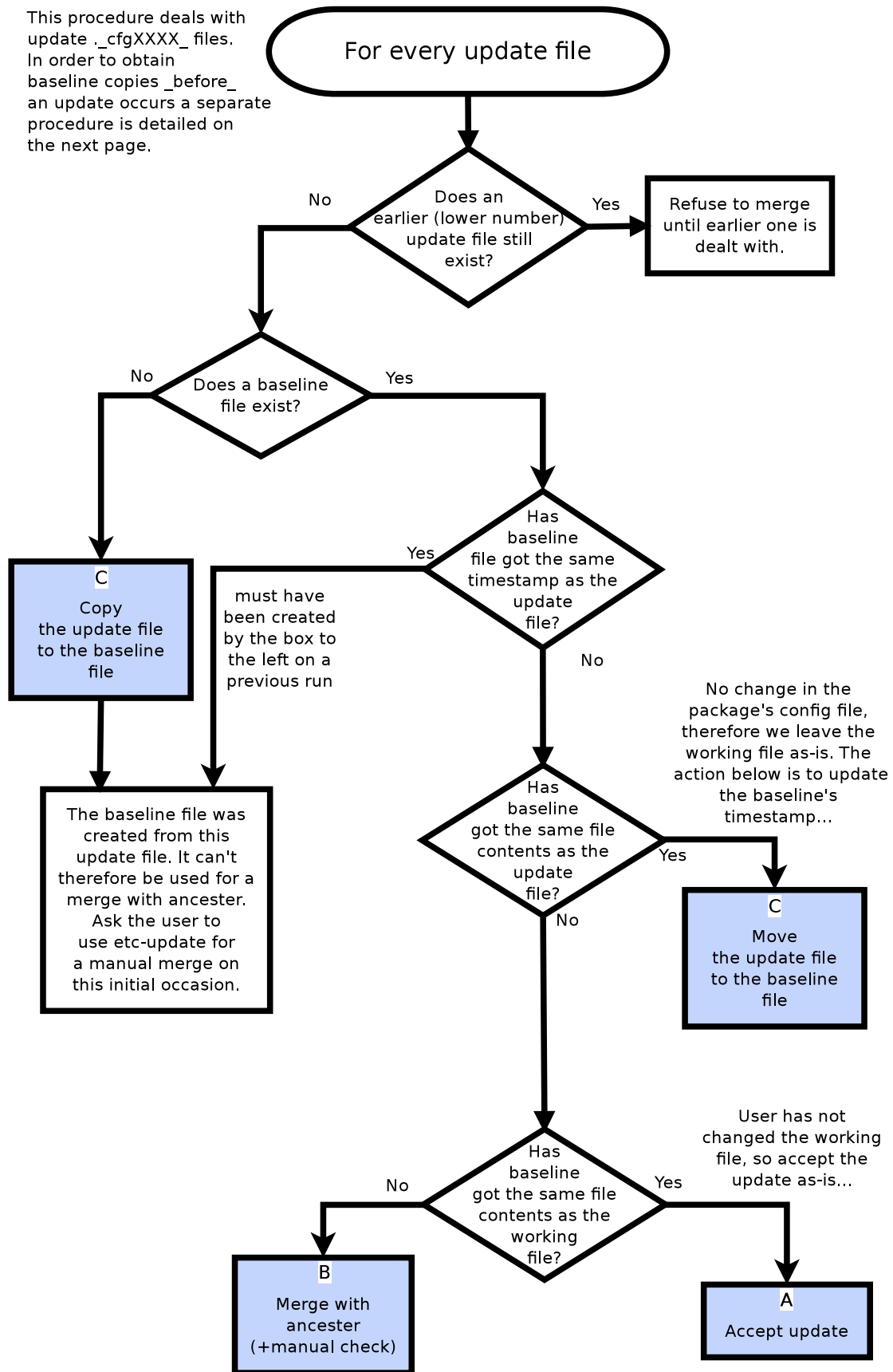
# How to determine which action is necessary?

This is explained using the two flowcharts "A" and "B" shown over the next two pages.

NOTE: In the flowcharts look for the blue action boxes (which map to the actions shown above)

# Flowchart A

This procedure deals with update `._cfgXXXX_` files. In order to obtain baseline copies `_before_` an update occurs a separate procedure is detailed on the next page.



# Flowchart B

The blue box at the bottom is very important functionality. It acquires initial baseline files for all un-edited working files.

The grey areas are for status reporting.

